

# Moon Property West



The Moon Property West is adjacent to Highway 64 - a divided 4-lane highway. Situated within an existing Industrial Park. Flat topography. Graded 100,000 SF expandable to 200,000 SF pad site. Ready for construction.

For more information

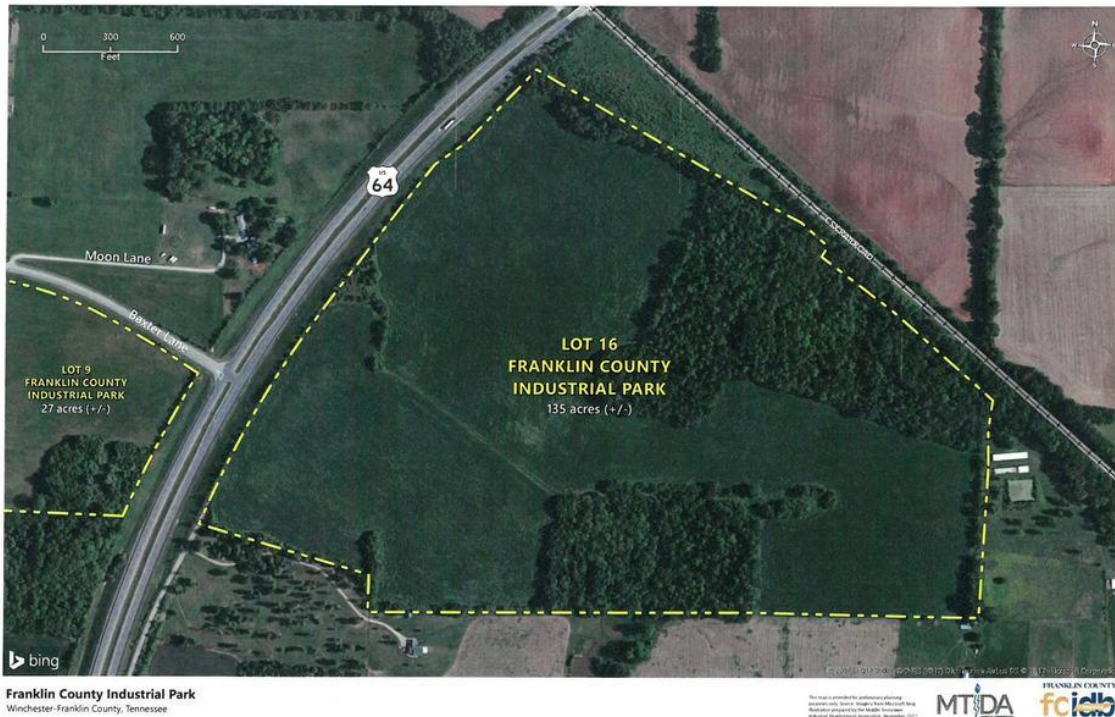
<https://properties.tvasites.com/inSite3-StandAlone/Search-InSite.aspx?details=4904>

# Moon Property East

The Moon Property East is adjacent to Highway 64, a 4-lane divided highway. The site has over 1000 feet of rail exposure at its northern boundary.

For more information

<https://properties.tvasites.com/inSite3-StandAlone/Search-InSite.aspx?details=4908>



# Wilton Building



26 +/- acres with all utilities and less than one mile to Highway 64 - a 4 lane highway. Phase I, II & III have been completed on the property.

For more information,

<https://properties.tvasites.com/inSite3-StandAlone/Search-InSite.aspx?details=84199>

Links:

<https://tnecd.com>

<https://www.tn.gov>

<https://www.tva.com>

<http://www.sctdd.org>

<https://www.franklincountyidb.com>